

Permitted Cannabis Property

Approved for Cultivation, Extraction and Infusion

FOR SALE IN PHOENIX

3433 West Earll Drive | Phoenix, Arizona



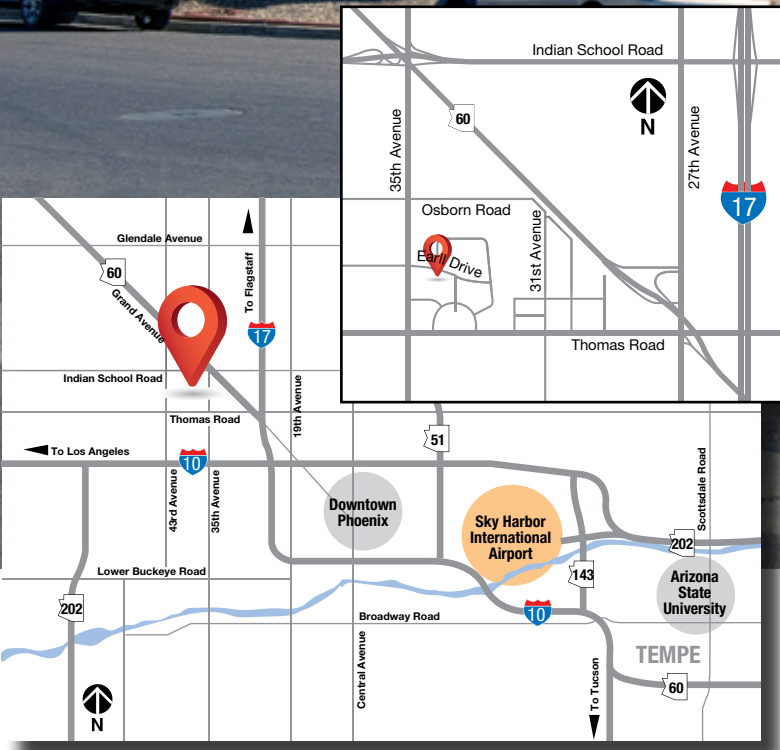
CLICK FOR 3D WALK-THRU



Property Features

- **Building Square Footage** 28,823 SF
- **Warehouse** 13,520 SF
- **Second Floor Office** 3,733 SF
- **Clear Height** - 14'-18'
- **Fire sprinklered**
- **Sales Price** - \$6 million
- **Seller Financing** - Negotiable
- **Acreage** - 1.62 acres
- **APN** - 108-03-104
- **Power** - 1600 amps, 277/480V, 3-phase

A-2 Zoning | Use Permit Granted by City of Phoenix in November, 2021



for further information contact

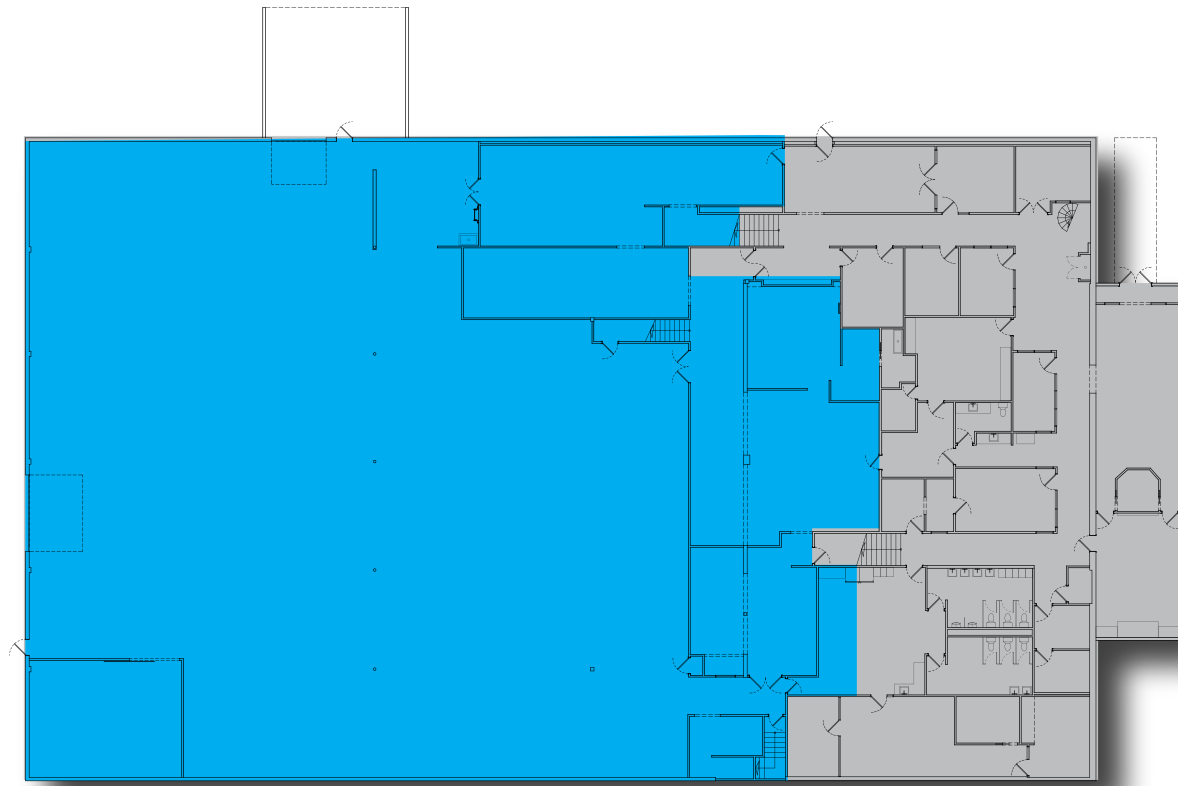
Patrick Moroney
602.684.6271

patrick.moroney@zonedproperties.com

ZONED
PROPERTIES BROKERAGE, LLC

14269 North 87th Street
Suite 205
Scottsdale, Arizona 85260
ZonedProperties.com

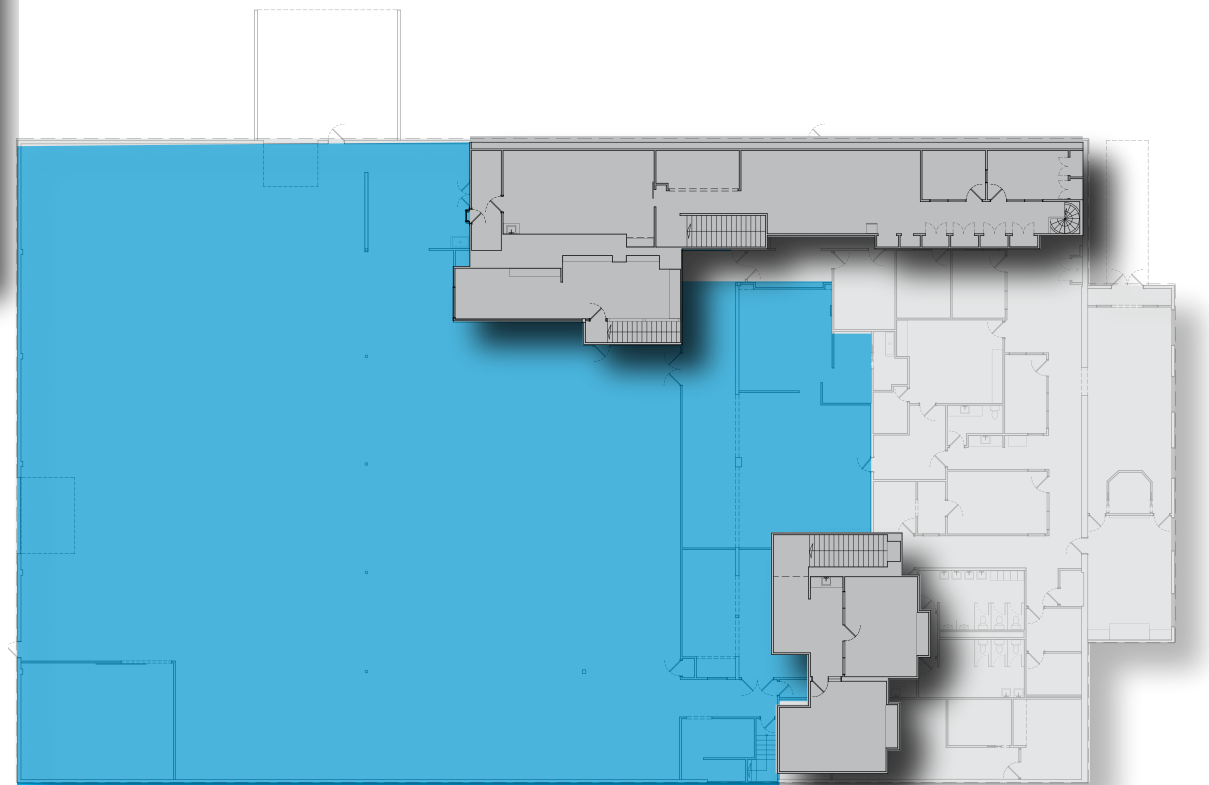
FLOOR PLAN



First Floor

11,530 SF Office

13,520 SF Warehouse



Second Floor

3,773 SF Office

for further information contact

Patrick Moroney
602.684.6271

patrick.moroney@zonedproperties.com

ZONED
PROPERTIES BROKERAGE, LLC

14269 North 87th Street
Suite 205
Scottsdale, Arizona 85260
ZonedProperties.com

PARKING



WAREHOUSE



OFFICE SPACE



for further information contact
Patrick Moroney
602.684.6271
patrick.moroney@zonedproperties.com

ZONED
PROPERTIES BROKERAGE, LLC

14269 North 87th Street
Suite 205
Scottsdale, Arizona 85260
ZonedProperties.com